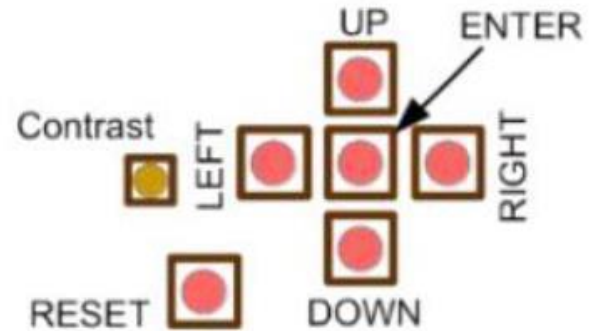
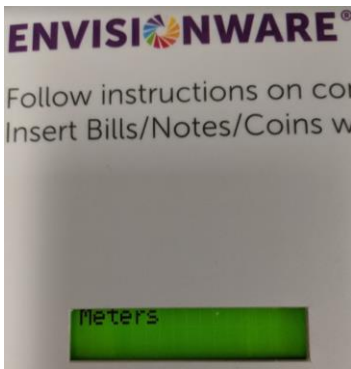
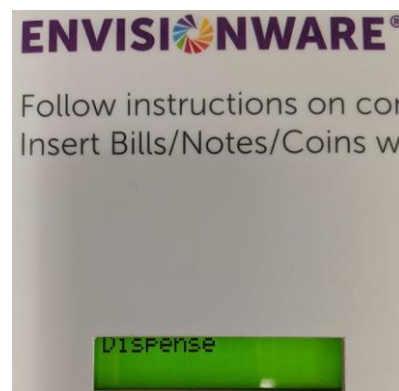
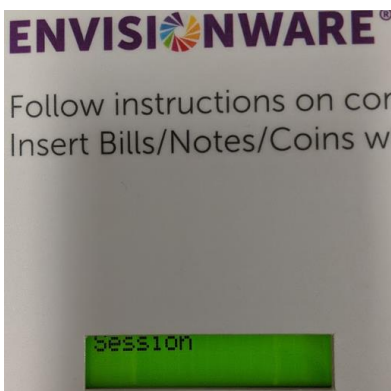


To Dispense and zero out

Step 1. Press and hold **ENTER** button to access the service/settings. "Meters" will Display on the LCD screen on top.

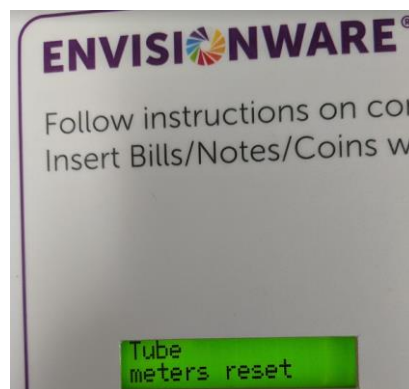
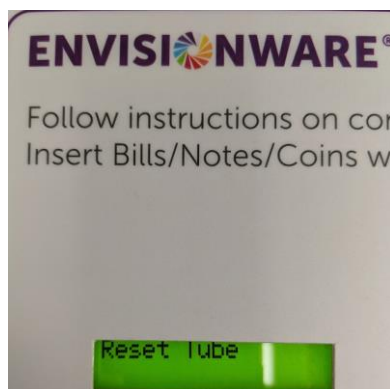
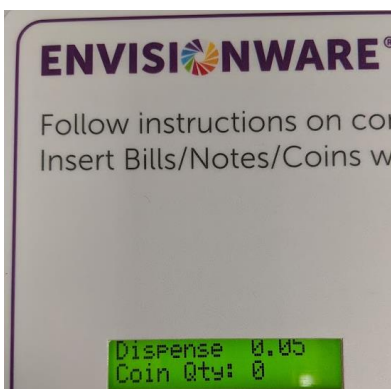


Step 2. Tap the **RIGHT** button to enter "Session" and then use the **UP** or **DOWN** button to get to "Dispense".



Step 3. Tap the **RIGHT** button and LCD display should indicate the denomination (possibly nickels) and quantity. Press **ENTER** to dispense. Our example shows that we already have zero nickels in the nickel tube. You have two options now to zero out the tubes.

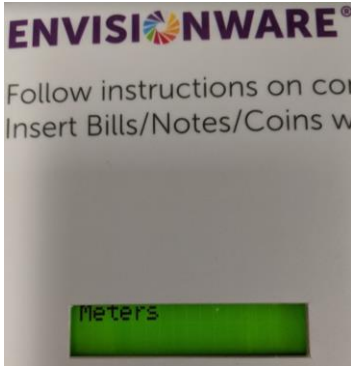
- **Option 1:** Press either the **UP** or **DOWN** button to switch to the next denomination (quarters or dimes). Press **ENTER** to dispense the rest of the coins/ghost coins (coins that the control board thinks is physically inside the tubes) making sure the "Coin Qty:" is at zero for all denominations.
- **Option 2:** Dispense all physical coins and make sure you physically see coins are no longer in the tubes. The control board may still think coins are still in the tubes even though you know physically there not. Use the **UP** or **DOWN** button to get to "Reset Tube" and hold down **ENTER** button for five seconds. "Tube meters reset" will display briefly, check and make sure all denominations quantity is at zero.



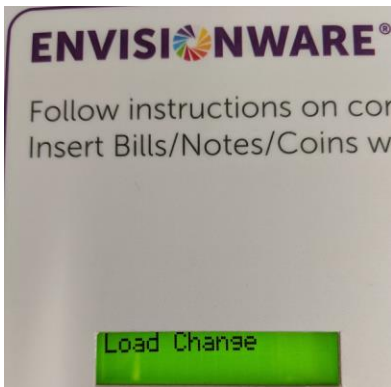
Step 4. To exit press the **LEFT** button to get back to "Meters" or press the **RESET** button holding it down for two seconds.

To load change

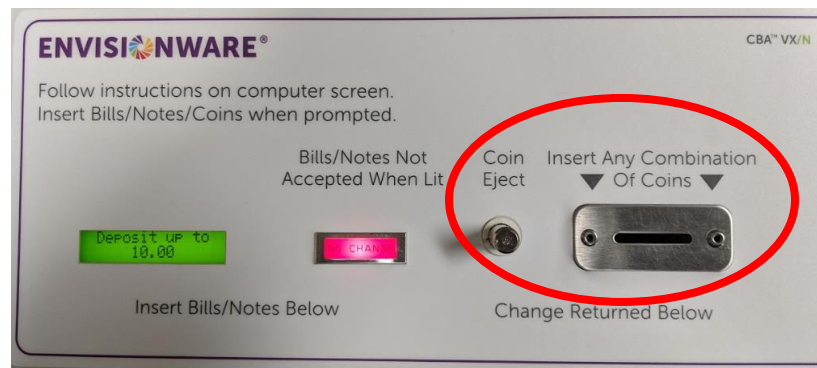
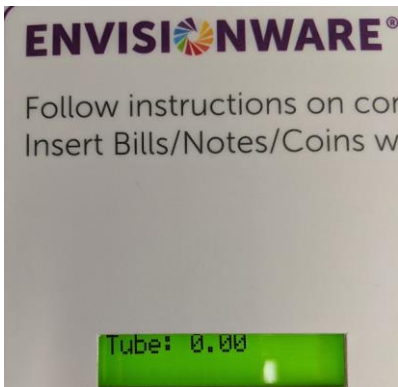
Step 1. Press and hold the **ENTER** button for five seconds to access the service/settings. “Meters” may display next



Step 2. Press the **DOWN** button to get to “Load Change”



Step 3. Press the **RIGHT** button and “Tube:” should indicate “0.00” if you have zero out the tubes properly. Insert coins through the top like a patron would to insure coins are being read.



Step 4. When you have inserted to the desired amount (recommend to fill at least half way for each tube) press the **LEFT** button to go back to “Load Change” or press the **RESET** button.